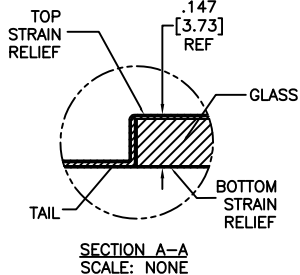

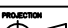


2			1		
TOP LEVEL NUMBER	SKU 98 NUMBER	TYPE	DIM "A" (TOTAL GLASS TO CONNECTOR)	A/G FINISH	PROD SPEC
17-8891-204	98-0003-2660-7	FFC	6.00" [152.40]	AG500	23655
17-8891-223	98-0003-2663-1	SER	6.00" [152.40]	AG500	23655
17-8891-220	98-0003-3124-3	USB R	6.00" [152.40]	AG500	23655
17-8891-206	98-0003-2201-0	NOV	SEE DWG	AG500	23655
17-8891-205	98-0003-2661-5	FFC	8.00" [203.20]	AG500	23655
17-8891-227	98-0003-2955-1	SER	8.00" [203.20]	AG500	23655
17-8891-226	98-0003-2664-9	USB R	8.00" [203.20]	AG500	23655



- | PINOUT |      |
|--------|------|
| 1      | LR   |
| 2      | LL   |
| 3      | SHLD |
| 4      | UL   |
| 5      | UR   |

UNITS	INCHES [MM]	
TOLERANCES UNLESS OTHERWISE SPECIFIED	 3M TOUCH SYSTEMS METHUEN, MA USA	
.X ±	COPYRIGHT 2004 THIS DOCUMENT IS COPYRIGHTED PROPERTY OF THE 3M COMPANY AND MAY NOT BE REPRODUCED WITHOUT 3M WRITTEN PERMISSION OR USED OR DISCLOSED FOR OTHER THAN 3M AUTHORIZED PURPOSES.	
.XX ± .03 [.76]		
.XXX ± .015 [.38]		
ANGLES ±1°		
THIRD ANGLE PROJECTION		
DO NOT SCALE DRAWING	DRAWN	MDS 6/19/06
SCALE 1 = 1		

05	REVISE	PER	CO	030452		6/09	SB							
04	REVISE	PER	CO	029404		8/08	SEB							
03	REVISE	PER	CO	028687		2/08	ACM							
REV						CHANGE NOTICE	DATE	DWG						
TITLE														
MARKETING DRAWING														
SCT32NN 19.42"														
CND FORMAT									AUTOCAD		SHEET		1 OF 1	
SIZE		DOCUMENT NO.						REV						
C		32144-MKT						05						