

SPECIFICATIONS

Mechanical

Insertion Force: 20N max.
Withdrawal Force: 4N min.
Durability: 500 Cycles.

Electrical

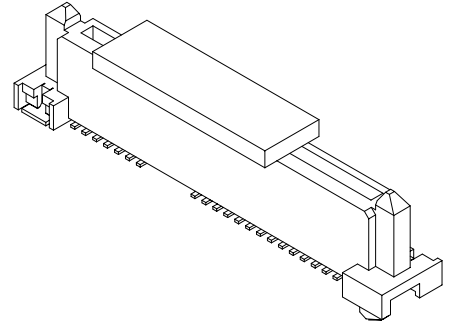
Voltage Rating: 250V.
Current Rating: 1.5A per pin min.
Contact Resistance: 30 mΩ max., Δ15 mΩ max. after stress.
Dielectric Withstanding Voltage: 500V AC.
Insulation Resistance: 1000MΩ min.

Physical

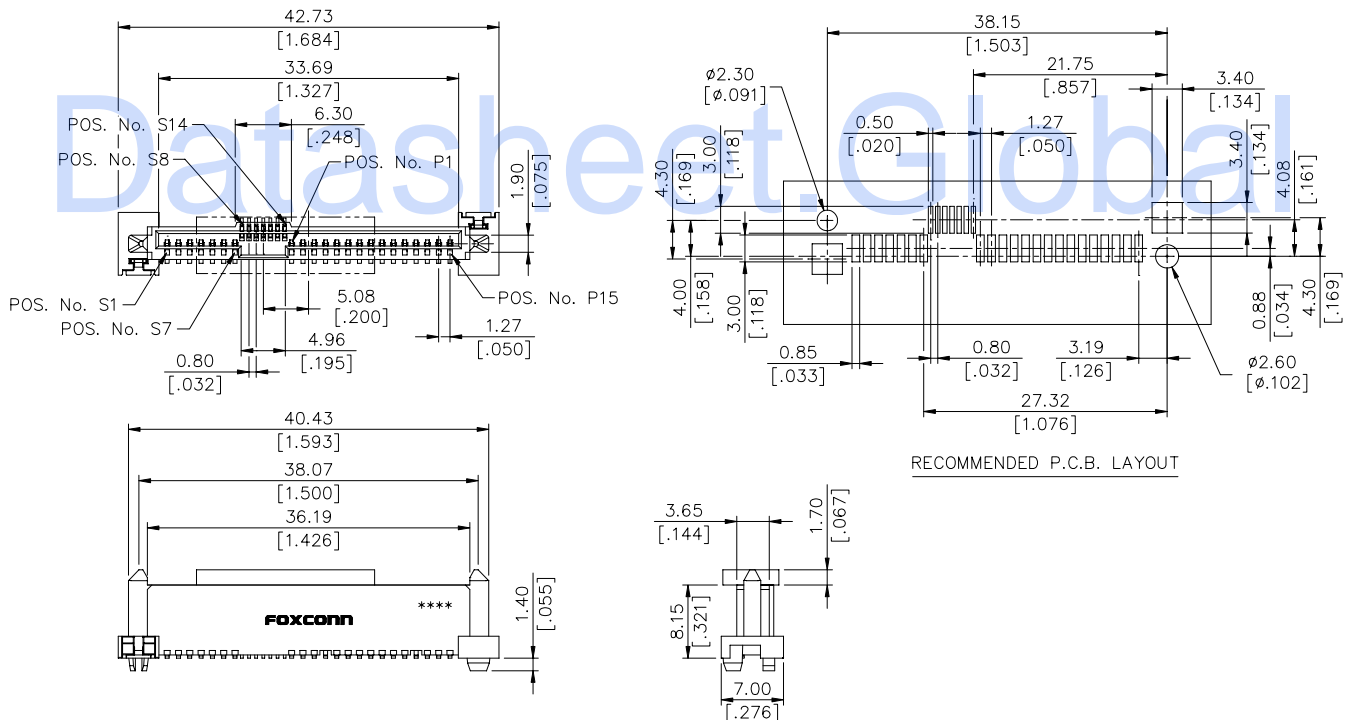
Housing: Thermoplastic, UL 94V-0 rated in Pink Color.
Contact: Copper alloy
Plating: See "ORDERING INFORMATION"
Operating Temperature: -55 to +105

SAS Connector

LD Series
V/T, SMT Type
Receptacle
1.27mm [.050"] Pitch
29 Pos.



DRAWING



ORDERING INFORMATION

PRODUCT NO. : LD 2 5 29 * - A 02 * *

S-ATA Series

Mating End Type
2 = Receptacle

Mounting End Type
5=Vertical, SMT

No. of Pos.
29=29 Pos.

PACKAGE TYPE:
6=T&R&COVER

HOUSING MATERIAL:
T=PA9T

Modification Code

SAS TYPE

Contact Area Plating

F=Gold Flash With RoHS COMPLIANT

H=30u" Gold With RoHS COMPLIANT

V=15u" Gold With RoHS COMPLIANT